

FORESTER 2015



SUBARU
ALL 4 THE DRIVER™



THE BEST AND NOTHING LESS IS WHAT YOU'VE COME TO EXPECT FROM SUBARU.



SYMMETRICAL ALL-WHEEL DRIVE

Subaru's renowned Symmetrical All-Wheel Drive (SAWD) and symmetrical drivetrain underpins the vehicle's superb balance and handling. By driving power simultaneously to all four wheels all of the time, SAWD delivers optimum grip, greater control and superior driving confidence.



my OWNER'S PROGRAM



It's reassuring to know that every Symmetrical All-Wheel Drive Subaru is backed by a 3 Year/Unlimited Kilometre Warranty, plus our 3 Year/75,000 Kilometre Capped Price Servicing Program¹, guaranteeing quality and affordable on-going maintenance.

Your Subaru ownership experience is protected even further by the advanced DataDot Theft Deterrent System – DATADOT[®]TDS[®].



BOXER ENGINE

At the heart of every Subaru lies the finely-tuned, high performance and legendary Boxer engine. The configuration and positioning of the horizontally-opposed Boxer engine results in a lower centre of gravity which delivers improved stability, cornering and traction with the road. This unique combination also creates a smoother power delivery, with less noise and vibration to the cabin and superior safety performance.



ANCAP
Safety ★★★★★

SAFETY

Subaru's advanced safety technologies are built around three pillars, protective, preventative and predictive safety. Starting with a chassis and body frame reinforced to increase frontal, side and rear crash safety, Subaru's maximum five-star ANCAP crashworthiness rating is achieved through the inclusion of seven airbags, a reinforced passenger safety cell, energy absorbing crumple zones and pre-tensioner front seat belts. Subaru's SAWD coupled with enhanced driving technologies such as Vehicle Dynamics Control, Anti-lock Braking System, Electronic Brakeforce Distribution and Electronic Stability Control helps prevent loss of control, while the predictive EyeSight[®] driver assist system available on selected variants helps to monitor the road ahead.

1. Available at participating Subaru Retailers only and does not apply to rental and some other classes of vehicle. For full Capped Price Servicing Program Terms and Conditions visit www.subaru.com.au/service/capped-price-servicing. Subaru BRZ variants are covered by our 3 Year/60,000 Kilometre Capped Price Servicing Program. 2. 12 Month Roadside Assistance Program is standard upon activation with relevant Motoring Club in each state. To receive this benefit the customer must opt into the 12 Month Roadside Assistance Program at time of vehicle delivery. Eligible customers are those retail and novated lease customers who purchase a new Subaru on or after 1st June 2013 and have less than 5 vehicles under the Club Membership offer. Customers must provide a valid phone and residential address, as well as date of birth. Fleet, Government and Rental companies are excluded.

PURE FREEDOM

Integral to every Subaru is freedom. The freedom that comes from knowing that some of the finest engineers in the world have designed, debated and then perfected every inch of your Subaru. The result is a reassuring confidence that is evident in the performance, safety and retained value of every Subaru.

The new 2015 Forester shares the unique DNA sequence that only Subaru can re-create. It's what makes every Subaru unique, and yet, the same. Superbly engineered, technically sophisticated and dynamically designed to deliver a performance that is All 4 the Driver™.

Available in a choice of naturally aspirated petrol, turbocharged petrol and turbocharged diesel engines.



FORESTER

GET MORE DONE.
HAVE MORE FUN.

THE FORESTER FEATURES SUBARU'S LEGENDARY COMBINATION OF SYMMETRICAL ALL-WHEEL DRIVE AND BOXER ENGINE FOR OPTIMUM GRIP, BALANCE AND CONTROL – A COMBINATION THAT EXPERTS ALL OVER THE WORLD AGREE MAKES ALL THE DIFFERENCE AND THE REASON FORESTER HAS BEEN AWARDED SEVEN AUSTRALIA'S BEST CARS AWARDS – IT'S THE REAL THING.



Model variant shown: Forester 2.5i-L



Model variant shown: Forester 2.5i-S

For every Forester driver, fun and passion mean something different. For some, it's about weekend sports and family pursuits. For others it's about urban cruising, exploring or a full day hitting the bike trails. Whatever drives you, Forester's meticulous design, space and versatility helps you get more done and have more fun.

With Subaru's iconic Boxer engine, Symmetrical All-Wheel Drive and 220mm of ground clearance, Forester is very capable on-road or off. The responsive and athletic performance is complemented by Forester's intelligent X-Mode¹ capability, excellent driver visibility and Subaru's revolutionary EyeSight[®] driver assist system on selected variants.

Driven by the ethos of freedom, the latest entertainment and smart technologies are incorporated into every element of the design. Infotainment that's as mobile as you are with enhanced driver comfort, encouraging you to go even further. Plus now you can do more while having less impact, thanks to Forester's excellent fuel economy and meeting EURO6² emissions standards across the range.

1. On CVT variants.

2. Results based on testing conducted in accordance with ADR 81/02.

ADVENTURE SEEKING



GET ADVENTUROUS AT SUBARU.COM.AU

Model variant shown: Forester 2.0XT

BORN FROM THE MUD, SWEAT AND CHEERS OF THE WORLD RALLY CIRCUIT STRAIGHT TO YOUR DRIVEWAY. THE FOURTH GENERATION FORESTER HAS BEEN RACE BRED AND FINE TUNED OVER THOUSANDS OF KILOMETRES OF GRAVEL AND BITUMEN. REFINED WITH PRECISE HANDLING, THE FORESTER SETS A NEW BENCHMARK IN SUV PERFORMANCE.

If ever you needed an excuse to take the longest route from A to B, this is it. The Forester takes adventure in its stride. Choose your level of excitement and control with Forester variants including Lineartronic™ Continuously Variable Transmission (CVT) or an easy to drive, six-speed manual transmission developed to deliver improved driveability and a quieter ride.

When the going gets tough, engage Forester's new X-Mode, standard on all CVT variants, featuring hill descent control and improved grip and traction in low speed, slippery conditions. Also designed to let you select your driving style of choice is Subaru Intelligent Drive (SI-Drive), available on petrol variants. In Forester 2.0XT and 2.0XT Premium SI-Drive offers three distinctive driving modes. Intelligent (I) mode for everyday, Sport (S) for enhanced acceleration or SportSharp (S#) for an exhilarating drive.

Auto Stop Start engine technology, standard on all naturally aspirated petrol variants, takes petrol engine efficiency to a new level while meeting EURO6' emissions standards by automatically stopping the engine and then restarting it in a fraction of a second with no driver intervention required. The fuel savings and engine stop time delivered by this system can be monitored on the Multi-Function Display.

For the ultimate thrill-seeker, the Forester 2.0XT and 2.0XT Premium deliver the ride you're looking for. With a high performance turbocharged direct injection Subaru Boxer engine, superior aerodynamics, striking 18" alloy wheels, and sports styling, the XT variants are the pinnacle of the Forester range.

1. Results based on testing conducted in accordance with ADR 81/02.

TOP TO BOTTOM:

- Electric sunroof - Forester 2.5i-S, Forester 2.0XT, Forester 2.0XT Premium, Forester 2.0D-S
- Shark fin antenna, rear spoiler - all model variants. Forester 2.0XT shown
- Front fog lights - all model variants





LIVE GENEROUSLY

A GENEROSITY OF SPACE, CULTIVATES A GENEROSITY OF SPIRIT. FORESTER IS A LUXURIOUS AWD SUV WITH A CULT-LIKE STATUS AND A PASSION THAT'S CONTAGIOUS AMONG AUSTRALIANS.

The Forester delivers a spacious cabin with a level of soft touch interior luxury that belies its rugged performance. Up front, the ergonomically designed cockpit puts the driver in the perfect position to view the Multi-Function Display and rear view reverse camera. Generous storage throughout includes moulded door pockets with bottle holders and a rear retractable centre armrest with integrated cup holders. Rear passengers can enjoy ample leg room, while the reclining rear seat function provides an additional level of comfort. Heater ducts in the rear are also standard as is dual zone climate control on all model variants. The cargo area offers abundant space for all your cargo needs, plus the versatility to fold the rear seats flat or in a 60/40 configuration should you need to move something sizeable.

For ultimate comfort, Forester 2.5i-S, 2.0XT Premium and 2.0D-S boast leather¹ seats coupled with heated front seats, eight-way power adjustable front seats, push button start and a powered rear tailgate/boot for easy access to your cargo at the push of a button, no effort required – so you can save your energy for climbing those mountains or shopping up a storm.

1. Some parts of seating not full natural leather.

TOP TO BOTTOM:

- USB connectivity. Model variant shown: Forester 2.5i-S
- Rear view reverse camera - all model variants
- Leather seats¹ - Forester 2.5i-S, Forester 2.0XT Premium, Forester 2.0D-S
- Powered rear tailgate/boot - Forester 2.5i-S, Forester 2.0XT Premium, Forester 2.0D-S. Model variant shown: Forester 2.0XT Premium





BREAK WITH CONVENTION

BE SEDUCED BY THE ENTICING GLOW OF THE FORESTER CABIN. CONTEMPORARY VOICE AND TOUCH SCREEN CONNECTIVITY INVITES YOU TO RELAX AND RECHARGE.

The Forester has a large centre display with a touch LCD screen featuring audio, smart phone and Pandora® compatibility using easy-to-understand graphics. Access to *Bluetooth*®¹ is standard including a premium audio system with a range of simple touch and voice commands. The rear view reverse camera across the range is also displayed on the LCD screen.

In addition to this, the Forester 2.5i-S, Forester 2.0XT Premium and Forester 2.0D-S variants offer a new level of on-board infotainment with the LCD touch screen displaying satellite navigation, while the Forester XT Premium comes alive with a harman kardon® 8-speaker sound system and amplifier with custom acoustics.

A coloured Multi Function Display provides real-time vehicle information. The leather wrapped, three-spoke steering wheel evokes a sense of true control and lets the driver directly interact with the vehicle's satellite navigation², audio and *Bluetooth*®¹ as well as SI-Drive and adaptive cruise control on selected variants.

1. Bluetooth® is a registered trademark of Bluetooth SIG Inc. System operation ability is subject to Bluetooth® wireless technology specification of individual phone. 2. Available on Forester 2.5i-S, Forester 2.0XT Premium and Forester 2.0D-S.

TOP TO BOTTOM:

- X-Mode - all CVT variants. Model variant shown Forester 2.0D-L (CVT)
- harman kardon® speakers and amplifier - Forester 2.0XT Premium
- USB connectivity x 2 - all model variants
- Audio and Bluetooth® steering wheel controls - all model variants



THINK OUTSIDE THE BOXER



GET THE FACTS AT SUBARU.COM.AU



Solid. Brave. Proven. Subaru's Boxer engine design lies at the heart of the Forester. The innovation doesn't stop there with every inch of the Forester a tribute to the boldness of Subaru's visionary engineers.

LEGENDARY BOXER ENGINE

Subaru's unsurpassed horizontally-opposed Boxer engine is designed to sit lower and flatter in the engine bay than traditional engines. Due to this unique configuration the engine delivers less noise and vibration to the cabin, while the lowered centre of gravity improves stability, cornering and traction with the road. Coupled with the Boxer engine is Subaru's iconic Symmetrical All-Wheel Drive which simultaneously drives power to all four wheels for superior grip and traction. Also, due to its low height, the engine is driven downwards and under the floor of the cabin in the event of a severe frontal collision to help reduce the risk of injury to occupants.

PETROL ENGINE

The Forester's petrol range includes a choice of engines; 2.0-litre four cylinder manual transmission or 2.5-litre four cylinder Lineartronic™ Continuously Variable Transmission (CVT), the former producing 110kW of power at 6200rpm and 126kW of power at 5800rpm respectively, while maintaining impressive fuel efficiency at 7.2-litre/100km¹ and 8.1-litre/100km¹.

While the 2.0-litre turbocharged four cylinder CVT engine produces 177kW of power at 5600rpm, 350Nm of torque at 3600rpm and impressive fuel efficiency at 8.5-litre/100km¹.

GO FURTHER, DO MORE



Enjoy plenty of get up and go with Forester's turbocharged horizontally-opposed Boxer diesel engine. Now available in CVT with manual mode or 6-speed manual transmission and in two variants; Forester 2.0D-L and Forester 2.0D-S. The 2.0-litre four cylinder turbocharged Boxer diesel is a spirited performer producing 108kW of power at 3600rpm and 350Nm of torque between 1600rpm-2400rpm.

Whether you're exploring the beauty of the coast or roaring down the freeway, the Boxer diesel engine means less stops and more fun. Enjoy the weekend adventure - one tank of diesel is all you need to get there and back again. With outstanding fuel economy, and an extraordinary driving range, the Forester diesel is capable of travelling over 1,000km² on a single tank. All while caring for the environment, by meeting EURO6¹ emissions standards.

ALL WHEELS, ALL OF THE TIME

SUPERIOR VEHICLE CONTROL FROM THE GROUND UP.

The sign of a true performer is good balance. And when it comes to driving a Subaru, superior balance equals superior vehicle control. That's why Subaru has built its reputation on its Symmetrical All-Wheel Drive (SAWD) system and a symmetrical drivetrain that delivers an innate sense of balance from the ground up.

SAWD delivers engine power to all four wheels simultaneously. Having power distributed across all four wheels, rather than two on conventional vehicles, gives you twice the grip capacity. So under acceleration there's more grip for cornering and more capacity to keep on track through the corners. Ultimately, having the driving force spread across all four wheels means greater control and confidence.

Driver enjoyment is delivered with Subaru Intelligent Drive (SI-Drive)¹ which regulates key engine functions to suit your driving style. Working in unison with the Boxer engine, the SI-Drive manages and fine-tunes the engine's power characteristics to offer optimum drivability and a smooth, responsive power delivery across the engine's operating range.

1. On petrol variants.



THE DYNAMIC FULLY INDEPENDENT
DOUBLE WISHBONE REAR SUSPENSION
LETS YOU ENJOY SHARPER HANDLING,
INSTINCTIVE RESPONSIVENESS,
BETTER BALANCE AND A BETTER FEEL
ON THE ROAD.





FORESTER

Model variant shown: Forester 2.0XT Premium

GET THE FACTS AT SUBARU.COM.AU

SAFETY WITHOUT COMPROMISE

THE 2015 FORESTER INCORPORATES
ADVANCED SAFETY TECHNOLOGIES.



Safety starts with a reinforced body frame to increase frontal, side and rear crash safety. Designated crumple zones direct impact energy away from the reinforced passenger safety cell, while seven airbags - including dual front, side, curtain and driver's knee airbags help protect occupants. Front seats have Emergency Locking Retractors (ELR) and pre-tensioners, and rear seats have Automatic Emergency Locking Retractors (A/ELR). The result is a maximum five-star ANCAP¹ crashworthiness rating.

Safety designed to help prevent loss of control is delivered via improved Vehicle Dynamics Control (VDC) which constantly monitors vehicle movement, engaging a range of technologies when required. With precision timing the VDC controls the Antilock Braking System (ABS), Traction Control System (TCS), Electronic Stability Control (ESC), TCS Limited Slip Device, Brake Override System (BOS), Electronic Brakeforce Distribution (EBD) and Hydraulic Brake Assist (HBA).

The rear view camera displayed on the 7" LCD screen provides excellent rear vision when reversing. Forester's Hill Descent Control is linked to X-Mode (CVT variants) to manage speed, braking and tyre slip in low speed and difficult driving conditions.

On selected variants the EyeSight[®] driver assist system provides audible and visual warnings to prompt the driver to take action in potentially dangerous situations and will also apply automatic braking intervention, when necessary, to help avoid or reduce the severity of a detected frontal collision.



1. ANCAP – Australasian New Car Assessment Program.

Overseas model variant shown.



READ ABOUT THE SAFETY TECHNOLOGIES AT [SUBARU.COM.AU](https://www.subaru.com.au)

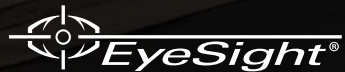
INBUILT INTUITION

EYESIGHT® DRIVER ASSIST SYSTEM

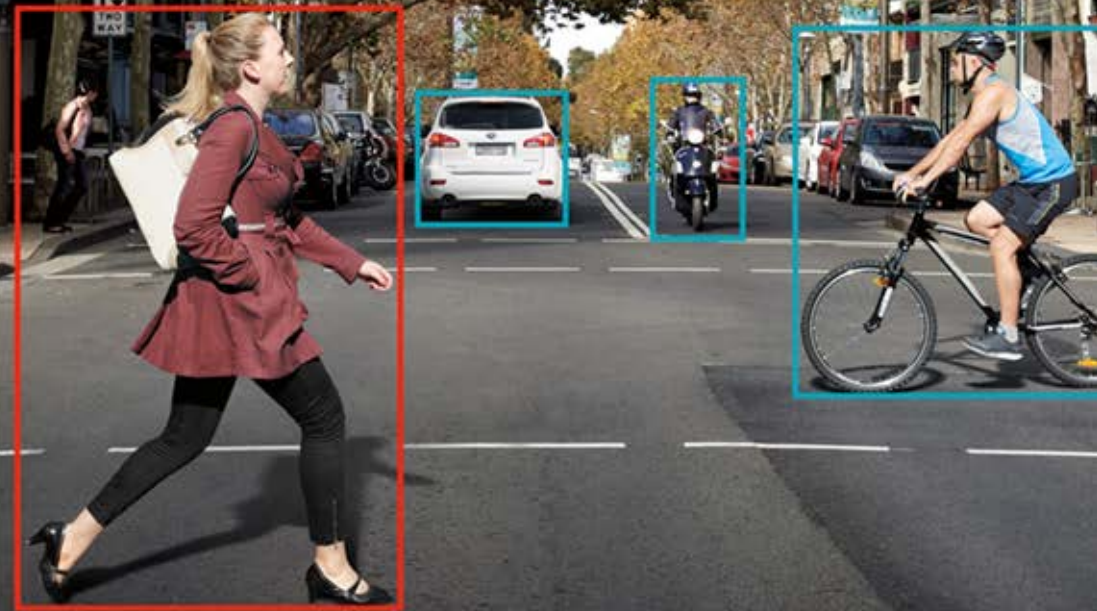
AVAILABLE ON SELECTED VARIANTS

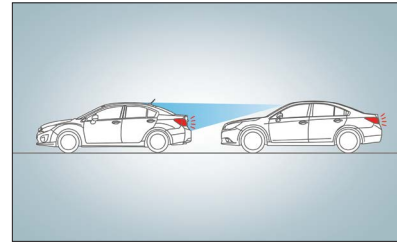
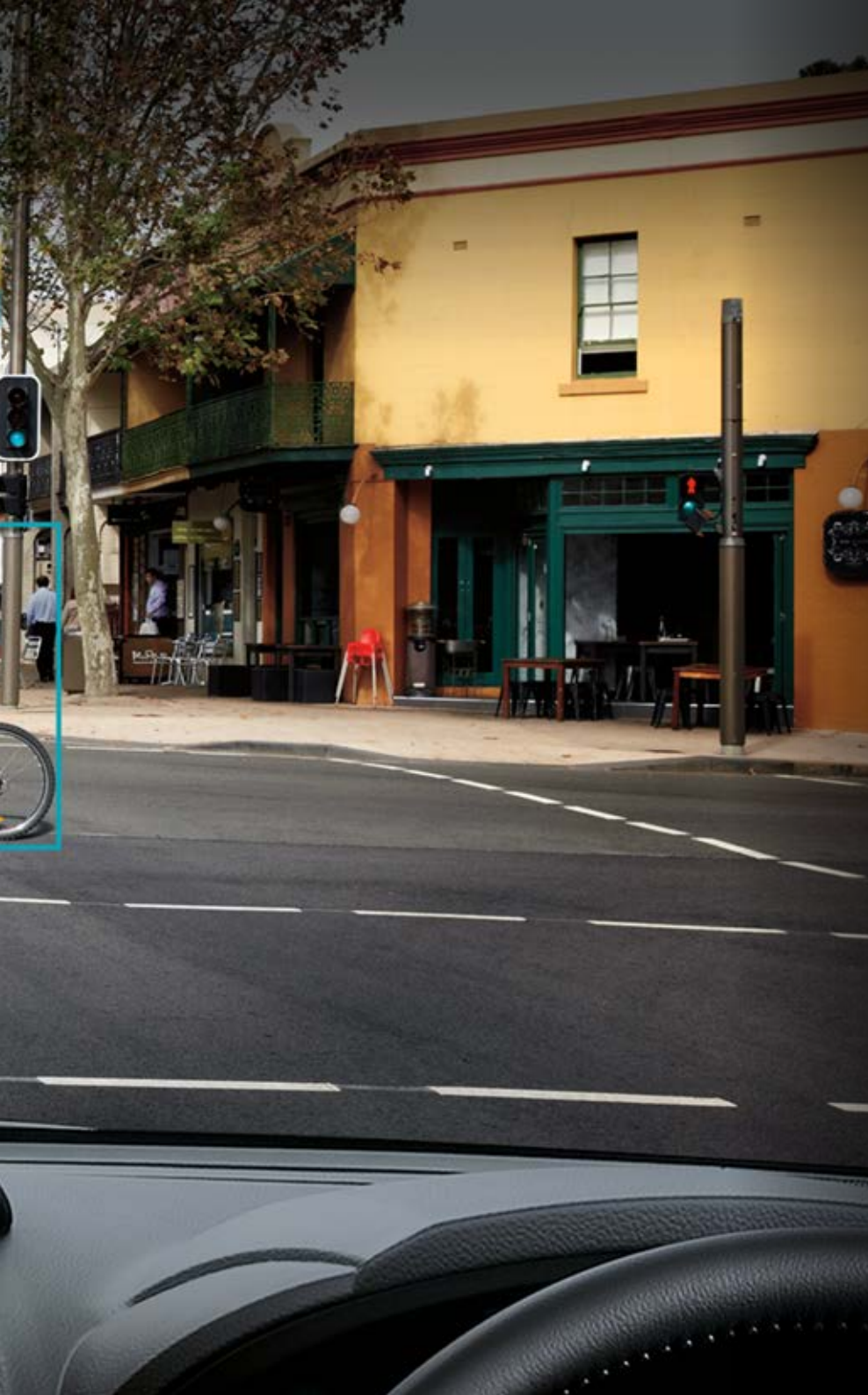
They say that to be forewarned, is to be forearmed. That's the philosophy behind the EyeSight® driver assist system offering a superior level of reassurance.

EyeSight® is a second pair of eyes that monitor the road ahead and recognise potentially dangerous driving situations. Using three-dimensional images captured by cameras mounted at the top of the windscreen, EyeSight® provides audible and visual warnings to prompt the driver to take action. EyeSight® will also apply automatic braking intervention, when necessary, to help avoid or reduce the severity of a detected frontal collision.

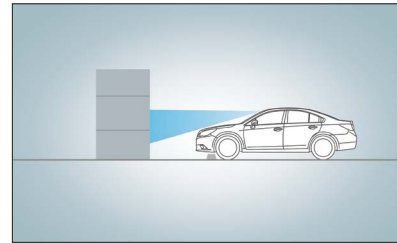


GO THE DISTANCE AT SUBARU.COM.AU

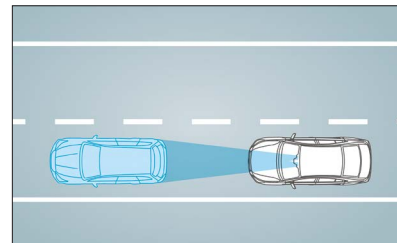




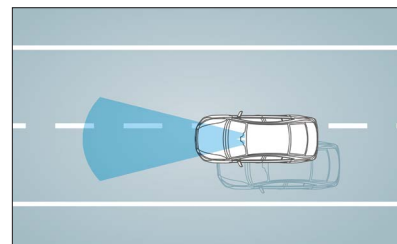
Pre-Collision Braking provides automatic braking to help avoid or reduce the severity of detected frontal accident impacts. Should the driver be distracted, or just not register the risk of a collision, braking will be automatically applied when a potential frontal collision is recognised by EyeSight®.



Pre-Collision Brake Assist recognises a potential frontal impact, alerts the driver and assists the driver by applying full braking force in a detected emergency-braking situation.



Pre-Collision Throttle Management reduces available acceleration when the system detects objects in front of the vehicle, which it is likely to impact. Engine output is restricted to reduce the possible impact force and frontal impact damage, and to help minimise injury should the driver mistakenly accelerate.



Adaptive Cruise Control maintains the speed set by the driver, but also regulates the vehicle's speed in order to maintain a set distance from the car in front. The driver can select from different distances and the EyeSight® system will automatically regulate the vehicle's speed in line with the traffic flow.

Lane Sway and Departure Warning monitors the vehicle's position within the road lane markings and sounds a warning when it recognises the potential for the vehicle to unintentionally move out of its lane, or when swaying within the lane is recognised.

WELCOME TO THE FAMILY



There are cars that simply get you from A to B, and then there are cars that empower you. Buying a Subaru is like embracing life with both hands and knowing that nothing is going to stop you. When you buy a new Subaru you are welcomed into an owner's program that gives you access to a number of benefits:

Subaru New Car Warranty - 3 Year/Unlimited Kilometres

Every new Subaru is covered by a three year unlimited kilometre manufacturer's national warranty. You can protect your investment further, by purchasing an additional Subaru Assured New Vehicle Warranty of up to three years¹. Visit subaru.com.au/warranty or ask your Subaru Retailer for more information.

Subaru Capped Price Servicing



With our 3 Year/75,000 Kilometre Capped Price Servicing Program², you'll now know the maximum amount you will have to pay for your next scheduled service during the Program period². You'll also have peace of mind knowing that specialist Subaru technicians will be looking after your pride and joy using only Genuine Subaru Parts.

DATADOT^{TDS}

Every Subaru is fitted with advanced engine immobilisers and the DataDot Theft Deterrent System – DATADOT^{TDS}. Microscopic dots are laser-etched with each vehicle's unique Vehicle Identification Number – making it a less attractive target for thieves³.

Three Year Rebate on Theft Insurance Excess

DataDot Technology (Australia) Pty Ltd will pay your theft insurance excess (up to a maximum of \$800 including GST) should your new Subaru be stolen and not recovered within 45 days despite the presence of DATADOT^{TDS}⁴ and warning labels⁴.

1-Month Health Check & Chat

The 1-Month Health Check and Chat is a free consultation within the first month after delivery of your new Subaru. It allows our factory-trained technicians to provide quick vehicle checks, and one of our Service Advisors will answer any of your questions to help ensure ongoing, worry-free experience.

My Subaru - Online Owner's Destination

The My Subaru Owner's Portal is an online destination for owners which provides access to exclusive benefits, tailored content, your vehicle's ownership history and much more. Login to My Subaru, the online destination for Subaru owners that will help you get more out of your vehicle, and more out of your life. my.subaru.com.au

Subaru Roadside Assistance

Enjoy 12 months of Australia-wide, standard Roadside Assistance⁵ provided in partnership with your local state Motoring Club - plus complimentary extras such as member magazines and Show Your Card and Save⁶ discounts.

Subaru Preferred Collision Repairer Network

A dedicated Subaru Preferred Collision Repairer helpline is available on 1800 737 179, 24-hours a day, seven days a week.

1. The Subaru Assured Warranty product is issued by our appointed network of authorised retailers. Subaru Australia does not underwrite the warranty and has no liability in respect of this warranty. 2. Available at participating Subaru Retailers only and does not apply to rental and some other classes of vehicle. For full Capped Price Servicing Program Terms and Conditions visit www.subaru.com.au/service/capped-price-servicing. Subaru BRZ variants are covered by our 3 Year/60,000 Kilometre Capped Price Servicing Program. 3. DATADOT^{TDS} is a theft deterrent not a theft prevention mechanism. 4. Vehicles must be comprehensively insured. Terms and conditions apply. 5. 12 Month Roadside Assistance Program is standard upon activation with relevant Motoring Club in each state. To receive this benefit the customer must opt into the 12 Month Roadside Assistance Program at time of vehicle delivery. Eligible customers are those retail and novated lease customers who purchase a new Subaru on or after 1st June 2013 and have less than 5 vehicles under the Club Membership offer. Customers must provide a valid phone and residential address, as well as date of birth. Fleet, Government and Rental companies are excluded. 6. Offers valid until 31st December 2015.





LIVE LIFE WITHOUT LIMITS

LET SUBARU ENHANCE THE WAY YOU LIVE - FROM GENUINE ACCESSORIES DESIGNED TO HELP YOU ENJOY ACTIVE PURSUITS, TO COMMUNITY-BASED PARTNERSHIPS THAT WILL INSPIRE YOU TO LIVE WITHOUT LIMITS.



Genuine Accessories

Subaru Genuine Accessories are designed to enhance your vehicle, are factory approved by Subaru and are protected by our manufacturer's warranty. For full warranty, pricing and applicability information visit us at subaru.com.au/warranty

Subaru Finance

Subaru Finance provides a range of competitive financial solutions to approved customers. Our finance specialists will help you find a finance package to meet your needs conveniently¹.

Subaru Insurance²

It's important to enjoy the freedom of owning a Subaru, but it's also important to protect it. A range of Subaru Insurance options provides a variety of choices, including: Subaru Comprehensive Motor Vehicle Insurance, Subaru Motor Equity Insurance and Subaru Loan Protection Insurance.

Subaru Assured Used Vehicles

Every Subaru Assured Used Vehicle has passed a 116-point quality inspection and comes with a one year unlimited kilometre Subaru Assured Warranty³ - to complement the balance of a new vehicle warranty or the statutory warranty that remains - from participating Subaru Assured Retailers.

Subaru Active Communities

At Subaru we believe in living life to the fullest - from cycling and triathlons, to holidays and the arts. Through Subaru Active we promote the importance of a balanced lifestyle through a number of sponsorships and associations.

Cycling Australia Partnership

Subaru's strong focus on improving safety, whether on two wheels or four, is reflected in our relationship with Cycling Australia. This partnership is aimed at building greater involvement in the sport through

state and national events including the Santos Tour Down Under, Subaru National Road Series, BMX Australia and more. While Subaru's association with the Amy Gillett Foundation, is integral to promoting the key message of sharing our roads for the safety of every road user.

Perisher Partnership

Subaru and Perisher share a long history, so it's not uncommon to find car parks full of Subarus at the resort. As the official vehicle sponsor of Perisher, Subaru's sure-footed SAWD system comes into its own, while we also use our profile to encourage safe driving, especially in the snow.

Get active at subaru.com.au/active



1. Finance provided by Australian and New Zealand Banking Group Limited ABN 11 005 357 522 Australian Credit Licence Number 234527 trading as Subaru Finance. All applications for credit are subject to ANZ's normal credit approval criteria. Terms and conditions, fees and charges apply. 2. Subaru Insurance products are issued by Allianz Australia Insurance Limited AFS Licence No. 234 708 ABN 15 000 122 850 (Allianz). In arranging this insurance Subaru (Aust) Pty Limited ABN 95 000 312 792 (Subaru) and the authorised dealers act as agents of Allianz and not as your agent. Neither Subaru nor any of its related companies or appointed authorised retailers have any liability in respect of these policies. The Subaru Assured Warranty product is issued by our appointed network of authorised retailers. Subaru Australia does not underwrite the warranty and has no liability in respect of this warranty. 3. The Subaru Assured Warranty product is issued by our appointed network of authorised retailers. Subaru Australia does not underwrite the warranty and has no liability in respect of this warranty.



Model variant shown: Forester 2.0D-S

GET ACTIVE AT [SUBARU.COM.AU](https://www.subaru.com.au)

FORESTER AWARDS



- 2014 - Australia's Best Cars, Best AWD SUV Under \$45,000, Subaru Forester 2.5i
- 2013 - Australia's Best Cars, Best SUV Under \$45,000, Subaru Forester 2.5i
- 2013 - Australasian New Car Assessment Program (ANCAP) five-star occupant safety rating
- 2011 - Australia's best selling compact SUV, VFACTS 2008, 2009, 2010 and 2011
- 2009 - Best Compact SUV - Carsales Network People's Choice Award 2009, Subaru Forester
- 2008 - Best Compact SUV - Carsales Network People's Choice Award 2008, Subaru Forester
 - People's Choice Award - Drive 2008, Subaru Forester
 - Australasian New Car Assessment Program (ANCAP) five-star occupant safety rating for the entire Forester range
 - International Engine of the Year Award, 2.0 - 2.5-litre class, Subaru Forester XT (2.5-litre turbocharged horizontally-opposed Boxer engine)
- 2006 - Australia's Best Cars, Best Recreational 4WD, Subaru Forester X
 - International Engine of the Year Award, 2.0 - 2.5-litre class, Subaru Forester XT (2.5-litre turbocharged horizontally-opposed Boxer engine)
- 2004 - Australasian New Car Assessment Program (ANCAP) five-star occupant safety rating for the entire Forester range
 - Queensland Country Life, Queensland Country and Recreational Car of the Year, Subaru Forester 2.0XT
- 2003 - Australia's Best Cars, Best Recreational 4 Wheel Drive, Subaru Forester X
 - Australasian New Car Assessment Program (ANCAP) five-star occupant safety rating for the Forester XS Luxury (the best-ever rating for a compact ATW)
- 2002 - Australia's Best Cars, Best Recreational 4-Wheel Drive, Subaru Forester X
 - The Courier Mail, Queensland Car of the Year, Outstanding Recreational Vehicle, Subaru Forester X
- 2001 - Australia's Best Cars, Best Recreational Vehicle Under \$45,000, Subaru Forester Limited
 - The Courier Mail, Queensland Car of the Year, Outstanding Recreational Vehicle, Subaru Forester
- 2000 - Australia's Best Cars, Best Recreational Vehicle, Subaru Forester
 - 4x4 Australia, Best All-Wheel Drive, Subaru Forester
 - The Courier Mail, Queensland Car of the Year, Outstanding Recreational Vehicle, Subaru Forester
- 1999 - RACT Best Cars, TAS, Best Recreational Vehicle & Overall Winner, Subaru Forester
 - RACQ/The Courier Mail, QLD, Q-Car 1999, Best Recreational Vehicle & Overall Winner, Subaru Forester

subaru.com.au

Subaru (Aust) Pty Limited ABN 95 000 312 792 (Subaru Australia)
PO Box 8311, Baulkham Hills NSW 2153, Toll Free: 1800 226 643
Subaru Australia reserves the right to vary vehicle specifications and standard features in Australia from those detailed in this brochure.
Vehicles shown in this brochure may be fitted with accessories available at additional cost.
No part of the brochure can be reproduced without written permission from Subaru Australia.
Printed in Australia.
© Copyright 2014 – Subaru (Aust) Pty Limited. All rights reserved.

FORESTER 2015

SPECIFICATIONS &
ACCESSORIES



SUBARU
ALL 4 THE DRIVER™

KEY FEATURES

FORESTER 2.0i-L

PERFORMANCE

- > Symmetrical All-Wheel Drive
- > Engine: 2.0-litre horizontally-opposed Boxer petrol engine
- > Transmission: 6-speed manual
- > Maximum power output: 110kW@6200rpm
- > Maximum torque: 198Nm@4200rpm
- > Automatic Stop Start
- > Subaru Intelligent Drive: SI-Drive 2 mode

EXTERIOR

- > 17" alloy wheels with full size alloy spare
- > Headlights - halogen with auto off
- > Front fog lights
- > Privacy glass
- > Rear spoiler
- > Roof rails
- > Shark fin antenna

INTERIOR

- > Air-conditioning - dual zone climate control
- > Heater ducts for rear passengers
- > Manual seat height lifter - driver
- > One touch electric folding rear seats
- > Power windows, mirrors and steering
- > Puddle lamps front
- > Reclining rear seat
- > Seat trim cloth (choice of black or grey)

ENTERTAINMENT/TECHNOLOGY

- > Multi-Function Display Unit (MFD)
- > Integrated infotainment system featuring:
 - Single CD player

- AM/FM radio
- 6 speakers
- MP3/WMA/iPod compatible
- 7" touch screen
- Pandora® compatible
- > Bluetooth®¹ wireless technology with:
 - Handsfree mobile communication
 - Audio streaming²
 - Voice command recognition
- > Rear view reverse camera
- > Auxiliary jack - front centre console
- > USB connections - front centre console



FORESTER 2.5i-L

PERFORMANCE

- > Symmetrical All-Wheel Drive
- > Engine: 2.5-litre horizontally-opposed Boxer petrol engine
- > Transmission: Lineartronic™ CVT with manual mode
- > Maximum power output: 126kW@5800rpm
- > Maximum torque: 235Nm@4100rpm
- > Auto Stop Start
- > Subaru Intelligent Drive: SI-Drive 2 mode
- > X-Mode

EXTERIOR

- > 17" alloy wheels with full size alloy spare
- > Headlights - halogen with auto off
- > Front fog lights
- > Privacy glass
- > Rear spoiler
- > Roof rails
- > Shark fin antenna

INTERIOR

- > Air-conditioning - dual zone climate control
- > Heater ducts for rear passengers
- > Manual seat height lifter - driver
- > One touch electric folding rear seats
- > Paddle gear shift on steering column
- > Power windows, mirrors and steering
- > Puddle lamps front
- > Reclining rear seat
- > Seat trim cloth (choice of black or grey)

ENTERTAINMENT/TECHNOLOGY

- > Multi-Function Display Unit (MFD)
- > Integrated infotainment system featuring:
 - Single CD player

- AM/FM radio
- 6 speakers
- MP3/WMA/iPod compatible
- 7" touch screen
- Pandora® compatible
- > Bluetooth®¹ wireless technology with:
 - Handsfree mobile communication
 - Audio streaming²
 - Voice command recognition
- > Rear view reverse camera
- > Auxiliary jack - front centre console
- > USB connections - front centre console



FORESTER 2.5i-S

PERFORMANCE

- > Symmetrical All-Wheel Drive
- > Engine: 2.5-litre horizontally-opposed Boxer petrol engine
- > Transmission: Lineartronic™ CVT with manual mode
- > Maximum power output: 126kW@5800rpm
- > Maximum torque: 235Nm@4100rpm
- > Auto Stop Start
- > Subaru Intelligent Drive: SI-Drive 2 mode
- > X-Mode

EXTERIOR

- > 18" alloy wheels with full size alloy spare
- > Door mirrors with indicators - heated
- > Electric sunroof
- > Headlights - self-levelling Xenon low beam with auto off - dusk sensing
- > Front fog lights
- > Privacy glass
- > Rear spoiler
- > Roof rails
- > Shark fin antenna

INTERIOR

- > Air-conditioning - dual zone climate control
- > Heater ducts for rear passengers
- > Heated front seats
- > One touch electric folding rear seats
- > Paddle gear shift on steering column
- > Powered rear boot/tailgate
- > Power windows, mirrors and steering
- > Puddle lamps front
- > Reclining rear seat
- > Seat trim leather³ with perforated seat inserts (choice of black or grey)
- > 8-way power seat - driver and front passenger

ENTERTAINMENT/TECHNOLOGY

- > Integrated infotainment system featuring:
 - Satellite navigation

- Single CD player
- AM/FM radio
- 6 speakers
- MP3/WMA/iPod compatible
- 7" touch screen
- Pandora® compatible
- > Bluetooth®¹ wireless technology with:
 - Handsfree mobile communication
 - Audio streaming²
 - Voice command recognition
- > EyeSight® Driver Assist System
- > Rear view reverse camera
- > Auxiliary jack - front centre console
- > USB connections - front centre console



1. Bluetooth® is a registered trademark of Bluetooth SIG Inc. System operation ability is subject to the Bluetooth® wireless technology specification of individual's phone. 2. There may be restrictions on features available for certain variants that are not fully compliant with AVCRP. 3. Some parts of the seating are not full natural leather.

FORESTER 2.0XT



PERFORMANCE

- > Symmetrical All-Wheel Drive
- > Engine: 2.0-litre direct injection turbocharged horizontally-opposed Boxer petrol engine
- > Transmission: Lineartronic™ CVT with manual mode
- > Maximum power output: 177kW@5600rpm
- > Maximum torque: 350Nm@2400-3600rpm
- > Subaru Intelligent Drive: SI-Drive 3 mode
- > X-Mode

EXTERIOR

- > 18" alloy wheels with full size alloy spare
- > Electric sunroof
- > Headlights - self-levelling Xenon low beam with auto off

- > Front fog lights
- > Privacy glass
- > Rear spoiler
- > Roof rails
- > Shark fin antenna

INTERIOR

- > Air-conditioning - dual zone climate control
- > Manual seat height lifter - driver
- > One touch electric folding rear seats
- > Paddle gear shift on steering column
- > Power windows, mirrors and steering
- > Puddle lamps front
- > Reclining rear seat
- > Seat trim cloth (black with accents)

ENTERTAINMENT/TECHNOLOGY

- > Multi-Function Display Unit (MFD)
- > Integrated infotainment system featuring:
 - Single CD player
 - AM/FM radio
 - 6 speakers
 - MP3/WMA/iPod compatible
 - 7" touch screen
 - Pandora® compatible
- > Bluetooth®¹ wireless technology with:
 - Handsfree mobile communication
 - Audio streaming²
 - Voice command recognition
- > Rear view reverse camera
- > Auxiliary jack - front centre console
- > USB connections - front centre console

FORESTER 2.0XT PREMIUM



PERFORMANCE

- > Symmetrical All-Wheel Drive
- > Engine: 2.0-litre direct injection turbocharged horizontally-opposed Boxer petrol engine
- > Transmission: Lineartronic™ CVT with manual mode
- > Maximum power output: 177kW@5600rpm
- > Maximum torque: 350Nm@2400-3600rpm
- > Subaru Intelligent Drive: SI-Drive 3 mode
- > X-Mode

EXTERIOR

- > 18" alloy wheels with full size alloy spare
- > Door mirrors with indicators - heated
- > Dual tail pipes
- > Electric sunroof
- > Headlights - self-levelling Xenon low beam with auto off - dusk sensing
- > Front fog lights
- > Privacy glass

- > Rear spoiler
- > Roof rails
- > Shark fin antenna

INTERIOR

- > Air-conditioning - dual zone climate control
- > Heater ducts for rear passengers
- > Heated front seats
- > One touch electric folding rear seats
- > Paddle gear shift on steering column
- > Powered rear boot/tailgate
- > Power windows, mirrors and steering
- > Puddle lamps front
- > Reclining rear seat
- > Seat trim leather³ with perforated seat inserts (choice of black or grey)
- > 8-way power seat - driver and front passenger

ENTERTAINMENT/TECHNOLOGY

- > Integrated infotainment system featuring:
 - Satellite navigation
 - Single CD player
 - AM/FM radio
 - 6 speakers
 - MP3/WMA/iPod compatible
 - 8 harman kardon⁴ speakers and amplifier
 - 7" touch screen
 - Pandora® compatible
- > Bluetooth®¹ wireless technology with:
 - Handsfree mobile communication
 - Audio streaming²
 - Voice command recognition
- > EyeSight® Driver Assist System
- > Rear view reverse camera
- > Auxiliary jack - front centre console
- > USB connections - front centre console

1. Bluetooth® is a registered trademark of Bluetooth SIG Inc. System operation ability is subject to the Bluetooth® wireless technology specification of individual's phone. 2. There may be restrictions on features available for certain variants that are not fully compliant with AVCRP. 3. Some parts of the seating are not full natural leather. 4. harman kardon is a registered trademark of HARMAN International Industries, Incorporated.

KEY FEATURES

FORESTER 2.0D-L



PERFORMANCE

- > Symmetrical All-Wheel Drive
- > Engine: 2.0-litre turbocharged horizontally opposed Boxer diesel engine
- > Transmission: 6-speed manual or Lineartronic™ CVT with manual mode
- > Maximum power output: 108kW@3600rpm
- > Maximum torque: 350Nm@1600-2400rpm
- > X-Mode (CVT only)

EXTERIOR

- > 17" alloy wheels with full size alloy spare
- > Headlights - halogen with auto off
- > Front fog lights
- > Privacy glass
- > Rear spoiler
- > Roof rails
- > Shark fin antenna

INTERIOR

- > Air-conditioning - dual zone climate control
- > Heater ducts for rear passengers
- > Manual seat height lifter - driver
- > One touch electric folding rear seats
- > Paddle gear shift on steering column (CVT only)
- > Power windows, mirrors and steering
- > Puddle lamps front
- > Reclining rear seat
- > Seat trim cloth (choice of black or grey)

ENTERTAINMENT/TECHNOLOGY

- > Multi-Function Display Unit (MFD)

> Integrated infotainment system featuring:

- Single CD player
- AM/FM radio
- 6 speakers
- MP3/WMA/iPod compatible
- 7" touch screen
- Pandora® compatible
- > Bluetooth®¹ wireless technology with:
 - Handsfree mobile communication
 - Audio streaming²
 - Voice command recognition
- > Rear view reverse camera
- > Auxiliary jack - front centre console
- > USB connections - front centre console

FORESTER 2.0D-S



PERFORMANCE

- > Symmetrical All-Wheel Drive
- > Engine: 2.0-litre turbocharged horizontally opposed Boxer diesel engine
- > Transmission: 6-speed manual or Lineartronic™ CVT with manual mode
- > Maximum power output: 108kW@3600rpm
- > Maximum torque: 350Nm@1600-2400rpm
- > X-Mode (CVT only)

EXTERIOR

- > 18" alloy wheels with full size alloy spare
- > Door mirrors with indicators - heated
- > Electric sunroof
- > Headlights - self-levelling Xenon low beam with auto off - dusk sensing
- > Front fog lights
- > Privacy glass
- > Rear spoiler
- > Roof rails
- > Shark fin antenna

INTERIOR

- > Air-conditioning - dual zone climate control
- > Heater ducts for rear passengers
- > Heated front seats
- > One touch electric folding rear seats
- > Paddle gear shift on steering column (CVT only)
- > Powered rear boot/tailgate
- > Power windows, mirrors and steering
- > Puddle lamps front
- > Reclining rear seat
- > Seat trim leather³ with perforated seat inserts (choice of black or grey)
- > 8-way power seat - driver and front passenger

ENTERTAINMENT/TECHNOLOGY

- > Multi-Function Display Unit (MFD)

> Integrated infotainment system featuring:

- Satellite navigation
- Single CD player
- AM/FM radio
- 6 speakers
- MP3/WMA/iPod compatible
- 7" touch screen
- Pandora® compatible
- > Bluetooth®¹ wireless technology with:
 - Handsfree mobile communication
 - Audio streaming²
 - Voice command recognition
- > Rear view reverse camera
- > Auxiliary jack - front centre console
- > USB connections - front centre console

1. Bluetooth® is a registered trademark of Bluetooth SIG Inc. System operation ability is subject to the Bluetooth® wireless technology specification of individual's phone. 2. There may be restrictions on features available for certain variants that are not fully compliant with AVCRP. 3. Some parts of the seating are not full natural leather.

TECHNICAL¹

MODEL		2.0i-L	2.5i-L	2.5i-S	2.0XT	2.0XT Premium	2.0D-L	2.0D-S
TRANSMISSION								
6-speed manual transmission		•					•	•
Lineartronic™ CVT with manual mode			•	•	•	•	•	•
ENGINE								
Engine type		Horizontally-opposed Boxer 4-cylinder, petrol engine			Direct injection, turbocharged horizontally-opposed Boxer 4-cylinder, petrol engine		Turbocharged horizontally-opposed Boxer 4-cylinder, diesel engine	
Valve mechanism		DOHC with Dual AVCS	DOHC with AVCS		DOHC with Dual AVCS		DOHC	
Bore x stroke	mm	84 x 90	94 x 90		86 x 86		86 x 86	
Capacity	cc	1995	2498		1998		1998	
Compression ratio		10.5:1	10:1		10.6:1		15.2:1	
Fuel tank capacity	litres				60			
Fuel system		Multi point sequential injection			Direct injection		Common rail direct injection	
Fuel requirement	RON	91			95		Diesel	
PERFORMANCE ²								
Maximum power output (DIN)	kW/rpm	110kW@6200rpm	126kW@5800rpm		177kW@5600rpm		108kW@3600rpm	
Maximum torque (DIN)	Nm/rpm	198Nm@4200rpm	235Nm@4100rpm		350Nm@2400-3600rpm		350Nm@1600-2400rpm	
Acceleration ³ 0 - 100 km/h	seconds	10.6	9.9		7.5		9.9	
Electronic Throttle Control system (ETC)		Drive-by-wire						
Fuel consumption (ADR81/02) ⁴ combined	l/100km	7.2	8.1		8.5		5.9 (MT) / 6.3 (CVT)	5.9 (MT) / 6.4 (CVT)
	urban	8.9	10.2		11.2		7.3 (MT) / 7.5 (CVT)	7.3 (MT) / 7.6 (CVT)
	extra urban	6.4	6.8		7		5.0 (MT) / 5.5 (CVT)	5.0 (MT) / 5.7 (CVT)
C0 ₂ emissions (ADR81/02)	combined (g/km)	168	187		197		152 (MT) / 163 (CVT)	152 (MT) / 166 (CVT)
Emission standards		EURO6						
SYMMETRICAL ALL-WHEEL DRIVE								
Type	Manual	Centre Differential with a Viscous Limited Slip Differential	n/a				Centre Differential with a Viscous Limited Slip Differential	
Type	Auto	n/a	Active Torque Split					
TRANSMISSION								
Gear ratio	1st	3.818	3.581		3.505		3.454 (MT) / 3.505 (CVT)	
	2nd	1.947	Continuously Variable		Continuously Variable		1.888 (MT) / Continuously Variable	
	3rd	1.296	Continuously Variable		Continuously Variable		1.062 (MT) / Continuously Variable	
	4th	1.029	Continuously Variable		Continuously Variable		0.785 (MT) / Continuously Variable	
	5th	0.825	Continuously Variable		Continuously Variable		0.634 (MT) / Continuously Variable	
(S# = SI-Drive Sports Sharp Mode)	6th	0.738	0.618		0.611 (S#0.968)		0.557 (MT) / Continuously Variable	
	7th	n/a		(S#0.785)		0.582		
	8th	n/a		(S#0.611)		n/a		
Gear ratio - reverse		4.072	3.667		2.345		3.636 (MT) / 2.345 (CVT)	
Final reduction gear ratio		4.444	3.900		4.111		4.444 (MT) / 4.111 (CVT)	
STEERING								
Steering		Electric power assistance rack and pinion						
Minimum turning circle (kerb to kerb)	m	10.6						
SUSPENSION								
Type	Front	McPherson strut type, independent suspension						
	Rear	Double wishbone type, independent suspension						
BRAKES								
Type	Front	Ventilated disc brake						
	Rear	Solid disc brake			Ventilated disc brake		Solid disc brake (MT) / Ventilated Disc Brake (CVT)	Ventilated disc brake
Brake booster type		Tandem						
ABS		4-channel, 4-sensor ABS with Electronic Brakeforce Distribution						
WHEELS AND TYRES								
Tyre manufacturer		Yokohama		Bridgestone		Yokohama	Bridgestone	
Tyres (width, profile, size, load index and speed rating)		225/60 R17 99H		225/55 R18 98H		225/60 R17 99H	225/55 R18 98H	
Rim size		17x7J		18x7J		17x7J	18x7J	
Wheels		17"		18"		17"	18"	
Spare wheel		17"		18"		17"	18"	
MEASUREMENT								
Overall length	mm	4595						
Overall width	mm	1795						
Overall height	mm	1735						
Wheel base	mm	2640						
Front track	mm	1545						
Rear track	mm	1550						
Minimum ground clearance ⁵	mm	220						
Cargo volume - rear seat up/down	litres	422 / 1481		422 / 1474	422 / 1474	422 / 1474	422 / 1481	422 / 1474
Kerb weight ⁶		1489 (MT) / 1519 (CVT)		1555	1631	1649	1578 (MT) / 1633 (CVT)	1612 (MT) / 1667 (CVT)
Tare mass ⁶	kg	1449 (MT) / 1479 (CVT)		1515	1591	1609	1538 (MT) / 1593 (CVT)	1572 (MT) / 1627 (CVT)
Seating capacity		5						
TOWING								
With trailer brakes	kg	1500			1800			
Without trailer brakes	kg				750			
Maximum tow ball down load	kg	150			180			

1. Subaru Australia reserves the right to change mechanical specification and equipment levels without notice. 2. All performance data measured using 95RON as required by Australian Design Rule 81/02. Vehicles tested in accordance with ADR 81/02. 3. Acceleration test performed under controlled conditions. 4. Fuel consumption figures calculated in accordance with Australian Design Rule 81/02. 5. Ground clearance at kerb weight. 6. Vehicle kerb weight and tare mass varies according to the types of optional equipment included.

FEATURES¹

MODEL	2.0i-L	2.5i-L	2.5i-S	2.0XT	2.0XT Premium	2.0D-L	2.0D-S
TRANSMISSION							
6-speed manual transmission	•					•	•
Lineartronic™ CVT with manual mode		•	•	•	•	•	•
SAFETY RATING							
ANCAP ² occupant safety rating (maximum 5)	5-star	5-star	5-star	5-star	5-star	5-star	5-star
COLLISION AVOIDANCE							
Symmetrical All-Wheel Drive (SAWD)	•	•	•	•	•	•	•
Vehicle Dynamics Control system (VDC) featuring:	•	•	•	•	•	•	•
Electronic Stability Control (ESC)	•	•	•	•	•	•	•
Anti-lock Braking System (ABS)	•	•	•	•	•	•	•
Electronic Brakeforce Distribution (EBD)	•	•	•	•	•	•	•
Brake Assist	•	•	•	•	•	•	•
Traction Control System (TCS)	•	•	•	•	•	•	•
TCS Limited Slip Device	•	•	•	•	•	•	•
4-wheel disc brakes	•	•	•	•	•	•	•
Hill Start Assist - forward and reverse	•	•	•	•	•	•	•
Rear view reverse camera	•	•	•	•	•	•	•
COLLISION PROTECTION							
SRS ³ airbags - dual front, dual front side and curtain	•	•	•	•	•	•	•
SRS ³ airbags - knee airbag (driver)	•	•	•	•	•	•	•
Front seat belts with pretensioners and load limiters	•	•	•	•	•	•	•
3 point A/ELR rear seat belts	•	•	•	•	•	•	•
Height adjustable seat belt anchors - driver and front passenger	•	•	•	•	•	•	•
Seat belt warning lights - all seats	•	•	•	•	•	•	•
Whiplash reduction seats	•	•	•	•	•	•	•
Rear seat headrests for 3 seating positions	•	•	•	•	•	•	•
Height and angle adjustable front seat headrests	•	•	•	•	•	•	•
Height adjustable rear seat headrests	•	•	•	•	•	•	•
Ring-shaped passenger safety cell	•	•	•	•	•	•	•
CHILD SAFETY							
Child seat anchor points (x3)	•	•	•	•	•	•	•
ISOFIX anchor points (x2)	•	•	•	•	•	•	•
Rear door child locks	•	•	•	•	•	•	•
INTELLIGENT DRIVING DYNAMICS							
Auto Stop Start	•	•	•				
Subaru Intelligent Drive (SI-Drive)	•	•	•	•	•		
EyeSight™ featuring:			•		•		
Adaptive cruise control			•		•		
Lane departure warning			•		•		
Lane sway warning			•		•		
Lead vehicle start alert			•		•		
Pre-collision braking system			•		•		
Pre-collision brake assist			•		•		
Pre-collision throttle management			•		•		
Electronic Throttle Control system (ETC)	•	•	•	•	•	•	•
X-Mode		•	•	•	•	(CVT only)	(CVT only)
EXTERIOR							
Body coloured mirrors and door handles	•	•	•	•	•	•	•
Bonnet with gas struts	•	•	•	•	•	•	•
Chrome type side skirt garnish				•	•		
Door mirrors with indicators	•	•		•		•	
Door mirrors with indicators - heated			•		•		•
Dual tail pipes				•	•		
Electric sunroof			•	•	•		•
Engine cover				•	•	•	•
Exterior grade badge				•	•	•	•
Front and rear wipers with front de-icer			•		•		•
Full size spare alloy wheel	•	•	•	•	•	•	•
Rear door, rear quarter and rear windscreen glass	Privacy Glass	Privacy Glass	Privacy Glass	Privacy Glass	Privacy Glass	Privacy Glass	Privacy Glass
Rear spoiler	•	•	•	•	•	•	•
Rear window wiper	•	•	•	•	•	•	•
Roof rails	•	•	•	Silver	Silver	•	•
Shark fin antenna	•	•	•	•	•	•	•
Tail pipe covers	•	•	•	•	•	•	•
17" alloy wheels	•	•				•	
18" alloy wheels			•	•	•		•
LIGHTING - EXTERIOR							
Daytime running lights - halogen	•	•	•	•	•	•	•
Front fog lights	•	•	•	•	•	•	•
Headlights - dusk sensing			•		•		•
Headlights - halogen with auto off	•	•				•	
Headlights - self-levelling Xenon low beam with auto off			•		•		•
Rear bumper reflector(s)	•	•	•	•	•	•	•
Rear LED stoplight	•	•	•	•	•	•	•
LIGHTING - INTERIOR							
Cabin and cargo area lights	•	•	•	•	•	•	•
Illuminated ignition ring	•	•		•		•	
Map lights (x2)	•	•	•	•	•	•	•

1. Subaru Australia reserves the right to change mechanical specification and equipment levels without notice. 2. The Australasian New Car Assessment Program (ANCAP) gives consumers consistent information on the level of occupant protection provided by vehicles in serious front and side crashes. 3. SRS: Supplemental Restraint System. Effective when used in conjunction with seat belts.

FEATURES¹

MODEL	2.0i-L	2.5i-L	2.5i-S	2.0XT	2.0XT Premium	2.0D-L	2.0D-S
AIR-CONDITIONING							
Air-conditioning - dual zone climate control	•	•	•	•	•	•	•
Anti-dust filter	•	•	•	•	•	•	•
Front and side demisters	•	•	•	•	•	•	•
Heater ducts for rear passengers	•	•	•	•	•	•	•
Rear windscreen demister (electric with timer)	•	•	•	•	•	•	•
SECURITY							
DATADOTrds® security system	•	•	•	•	•	•	•
Immobiliser security system	•	•	•	•	•	•	•
Vehicle pre-wired for alarm system installation	•	•	•	•	•	•	•
INSTRUMENTATION AND CONTROLS							
Adjustable steering wheel - height and telescopic	•	•	•	•	•	•	•
Electroluminescent gauges				•	•		
Instrument cluster	•	•	•	•	•	•	•
One touch lane change indicator	•	•	•	•	•	•	•
Paddle gear shift on steering column		•	•	•	•	CVT	CVT
Steering wheel controls:	•	•	•	•	•	•	•
Audio	•	•	•	•	•	•	•
Adaptive cruise control			•		•		
Bluetooth® ²	•	•	•	•	•	•	•
EyeSight® Driver Assist system			•		•		
MFD	•	•	•	•	•	•	•
SI-Drive	•	•	•	•	•		
Multi-Function Display unit (MFD) featuring:	•	•	•	•	•	•	•
4.3" LCD screen	•	•	•	•	•	•	•
Outside temperature and clock	•	•	•	•	•	•	•
Fuel economy and journey information	•	•	•	•	•	•	•
Air-conditioning, seat belt and airbag	•	•	•	•	•	•	•
Eco-gauge information	•	•	•	•	•	•	•
EyeSight®			•		•		
Auto Start Stop	•	•	•				
VDC operating information	•	•	•	•	•	•	•
Vehicle condition/maintenance self-check	•	•	•	•	•	•	•
Warning display	•	•	•	•	•	•	•
X-Mode		•	•	•	•	CVT	CVT
STORAGE							
Cargo luggage hooks	•	•	•	•	•	•	•
Centre console box - sliding armrest		•	•	•	•	CVT	CVT
Cupholders - centre console	•	•	•	•	•	•	•
Cupholders - rear	•	•	•	•	•	•	•
Door pockets with integrated bottle holder - front and rear	•	•	•	•	•	•	•
Front centre tray	•	•	•	•	•	•	•
Pull-out cargo area tie down points	•	•	•	•	•	•	•
Retractable cargo security blind	•	•	•	•	•	•	•
Seat back pocket - driver and front passenger			•		•		•
Seat back pocket - front passenger side	•	•		•		•	
Tool kit	•	•	•	•	•	•	•
CONVENIENCE							
12v/120W power jacks (x3)	•	•	•	•	•	•	•
Boot/tailgate auto unlock on remote central locking keys	•	•	•	•	•	•	•
Driver's footrest	•	•	•	•	•	•	•
Interior fuel lid lock release	•	•	•	•	•	•	•
Intermittent variable speed front windscreen wipers	•	•	•	•	•	•	•
Rain sensing front windscreen wipers			•		•		•
Power mirrors and windows-driver window with off delay timer	•	•	•	•	•	•	•
Powered rear boot/tailgate with memory function			•		•		•
Power steering	•	•	•	•	•	•	•
Rear seat centre armrest	•	•	•	•	•	•	•
Remote central locking	•	•	•	•	•	•	•
Remote central locking keys (x2)	•	•	•	•	•	•	•
Smart key and push button start ignition			•		•		•
Sunvisors	•	•	•	•	•	•	•
INTERIOR TRIMS							
Cargo area carpet colour - black	•	•	•	•	•	•	•
Carpet trim - black	•	•	•	•	•	•	•
Instrument panel finish	Matt Silver	Matt Silver	Matt Silver	Matt Silver	Matt Silver	Matt Silver	Matt Silver
Leather steering wheel / gear shift	•	•	•	•	•	•	•
Seat trim - cloth	•	•		With Accents		•	
Seat trim - leather ³ - perforated seat inserts			•		•		•
Seat trim colour - black	•	•	•	•	•	•	•
Seat trim colour - grey	•	•	•		•	•	•
SEATING EXTRAS							
60/40 split folding rear seats	•	•	•	•	•	•	•
8-way power seat - driver and front passenger			•		•		•
Heated seats - driver and front passenger			•		•		•
Manual seat height lifter - driver	•	•		•		•	
One touch electric folding rear seats	•	•	•	•	•	•	•
Reclining rear seat	•	•	•	•	•	•	•

1. Subaru Australia reserves the right to change mechanical specification and equipment levels without notice. 2. Bluetooth® is a registered trademark of Bluetooth SIG Inc. System operation ability is subject to the Bluetooth® wireless technology specification of individual's phone. 3. Some parts of the seating are not full natural leather.

FEATURES¹

MODEL	2.0i-L	2.5i-L	2.5i-S	2.0XT	2.0XT Premium	2.0D-L	2.0D-S
ENTERTAINMENT							
Integrated Infotainment System featuring:	•	•	•	•	•	•	•
Satellite navigation			•		•		•
AM/FM radio	•	•	•	•	•	•	•
6 speakers	•	•	•	•		•	•
8 harman kardon [®] speakers with amplifier					•		
MP3/WMA/iPod compatible	•	•	•	•	•	•	•
Pandora [®] compatible	•	•	•	•	•	•	•
Single CD player	•	•	•	•	•	•	•
7" LCD touch screen	•	•	•	•	•	•	•
Bluetooth [®] wireless technology with:	•	•	•	•	•	•	•
Handsfree mobile communication	•	•	•	•	•	•	•
Audio streaming ⁴	•	•	•	•	•	•	•
Voice command recognition	•	•	•	•	•	•	•
Auxiliary jack - front centre console	•	•	•	•	•	•	•
USB connection - front centre console (x2)	•	•	•	•	•	•	•
WARRANTY							
3 Year/Unlimited Km Warranty	•	•	•	•	•	•	•
3 Year/75,000km Capped Price Servicing Program ⁵	•	•	•	•	•	•	•
12 Month Roadside Assistance Program ⁶	•	•	•	•	•	•	•

INTERIOR

TRIM COLOUR



GREY OR BLACK CLOTH:
Forester 2.0i-L, Forester 2.5i-L and Forester 2.0D-L



GREY LEATHER⁷:
Forester 2.5i-S, Forester 2.0D-S and
Forester 2.0XT Premium



BLACK CLOTH WITH ACCENTS:
Forester 2.0XT



BLACK LEATHER⁷:
Forester 2.5i-S, Forester 2.0D-S and
Forester 2.0XT Premium

ENTERTAINMENT



INTEGRATED INFOTAINMENT:
Forester 2.0i-L, Forester 2.5i-L,
Forester 2.0XT and Forester 2.0D-L



INTEGRATED INFOTAINMENT
FEATURING SATELLITE NAVIGATION:
Forester 2.5i-S, 2.0XT Premium and
Forester 2.0D-S

1. Subaru Australia reserves the right to change mechanical specification and equipment levels without notice. 2. harman kardon is a registered trademark of HARMAN International Industries, Incorporated. 3. Bluetooth[®] is a registered trademark of Bluetooth SIG Inc. System operation ability is subject to the Bluetooth[®] wireless technology specification of individual's phone. 4. There may be restrictions on features available for certain variants that are not fully compliant with AVCRP. 5. Available at participating Subaru Retailers only and does not apply to rental and some other classes of vehicle. For full Capped Price Servicing Program Terms and Conditions visit www.subaru.com.au/service/capped-price-servicing. Subaru BRZ variants are covered by our 3 Year/60,000 Kilometre Capped Price Servicing Program. 6. 12 Month Roadside Assistance Program is standard upon activation with relevant Motoring Club in each state. To receive this benefit the customer must opt into the 12 Month Roadside Assistance program at time of vehicle delivery. Eligible customers are those retail and novated lease customers who purchase a new Subaru on or after 1st June 2013 and have less than 5 vehicles under the Club Membership offer. Customers must provide a valid phone and residential address, as well as date of birth. Fleet, Government and Rental companies are excluded. 7. Some parts of the seating are not full natural leather.

ACCESSORIES¹

Freedom is in Subaru's DNA. But your DNA is unique. That's why we give you the freedom to exploit your individuality with Subaru Genuine Accessories. Factory approved by Subaru – for your Subaru – they can enhance your vehicle to meet your lifestyle. From the practical, to the purely aesthetic, the possibilities are endless. And naturally when you purchase Subaru Genuine Accessories, you are protected by our manufacturer's warranty.

For full warranty, pricing and applicability information visit us at subaru.com.au

SUBARU.COM.AU FOR FULL DETAILS ON THE TAILOR-MADE ACCESSORIES AVAILABLE FOR YOUR SUBARU MODEL.



FRONT GRILLE (BLACK)



BUMPER UNDER GUARD (FRONT)



BUMPER UNDER GUARD (REAR)
(N/A TOWBAR & REVERSE PARK ASSIST)



FRONT UNDER SPOILER - AVAILABLE ON
FORESTER 2.0XT & 2.0XT PREMIUM



CARBON PANEL INTERIOR TRIM - CVT



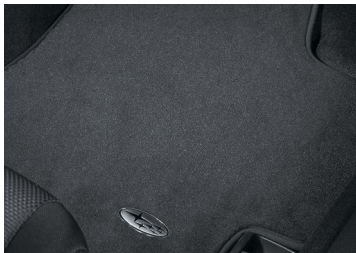
CARBON PANEL INTERIOR TRIM - MT



CARGO STEP PANEL (RESIN)



CARGO TRAY (LOW DISH)



CARPET MAT SET



RUBBER MAT SET



BUMPER CORNER GUARDS



BODY SIDE MOULDING



WEATHER SHIELDS



MUD GUARDS SET (FRONT)
(N/A SIDE SKIRTS)



PET PROTECTION SEAT COVER



BOOTLIP & BUMPER PROTECTOR



CARGO ROOM NET (FLOOR)



CARGO ROOM NET (REAR SEAT BACK)



CARGO ROOM NET (REAR TAILGATE)



CARGO ROOM NET (SIDE X2)



TOW BAR KIT



CARGO BARRIER



REAR SUNSHADES



SIDE AND REAR QUARTER SUNSHADES

¹ Subaru Australia reserves the right to change mechanical specification and equipment levels without notice.

ACCESSORIES¹



THULE GO BOX



THULE GO PACK SET (4 BAGS)



ROOF CROSS BARS



WATER CRAFT HOLDER²



UNIVERSAL LOCKING ARMS²



SURFBOARD CARRIER²



SIDE STEP - STEP UP



LUGGAGE POD MOTION 200² (SILVER)



LUGGAGE POD MOTION 800² (BLACK)



LUGGAGE POD ATLANTIS 780²
(GLOSS BLACK) (LARGE)



REAR PARKING ASSIST



BICYCLE HOLDER² (FORK MOUNT)



BICYCLE HOLDER² (UPRIGHT)



TOW BAR MOUNTED BIKE CARRIER
(TWO BIKES)



TOW BAR MOUNTED BIKE CARRIER
(THREE BIKES)



SECURITY ALARM SYSTEM



WHEEL LOCK NUTS



FIRST AID KIT

1. Subaru Australia reserves the right to change mechanical specification and equipment levels without notice. 2. Roof cross bars required. 3. Eclipse AVN accessory fit audio and navigation system with 7-inch WQVGA touch screen, MP3/WMA/iPod/DIVX compatible, single CD/DVD player, USB input with SUNA live traffic, school zone, railway crossing and safety camera alerts.



MODEL VARIANT SHOWN: Forester 2.0XT

A HUE THAT'S YOU

One of the final choices – but one of the most important! The colour you choose for your Forester makes a bold statement about who you are. So we've made sure you've got lots of ways to express yourself – with a wide range of colours to make your Forester more... you.

All colours available in all model variants.



CRYSTAL WHITE PEARL



QUARTZ BLUE PEARL



BURNISHED BRONZE METALLIC



ICE SILVER METALLIC



JASMINE GREEN METALLIC



DARK GREY METALLIC



VENETIAN RED PEARL



CRYSTAL BLACK SILICA