



Das Auto.

# The Caravelle and Multivan



## Technical specifications

Engine	Caravelle TDI340	Multivan TDI340	Multivan TDI400
Type	4 Cylinders, DOHC, 16 Valve	4 Cylinders, DOHC, 16 Valve	4 Cylinders, DOHC, 16 Valve
Capacity, litres/cc	2.0 / 1,968	2.0 / 1,968	2.0 / 1,968
Installation	Transverse installation	Transverse installation	Transverse installation
Bore x Stroke / Compression ratio	81.0mm x 95.5mm / 16.5:1	81.0mm x 95.5mm / 16.5:1	81.0mm x 95.5mm / 16.5:1
Construction materials	Alloy head with cast iron block	Alloy head with cast iron block	Alloy head with cast iron block
Maximum power, kW @ rpm	103 @ 3,500	103 @ 3,500	132 @ 4,000
Maximum torque, Nm @ rpm	340 @ 1,750 – 2,500	340 @ 1,750 – 2,500	400 @ 1,500 – 2,000
Induction type	Single turbocharger	Single turbocharger	Bi-turbochargers
Intercooled	Yes	Yes	Yes
Transmission – automatic	7 Speed DSG	7 Speed DSG	7 Speed DSG
Driven wheels	Front wheel drive	Front wheel drive	Front wheel drive/Optional 4MOTION
Wheels and tyres			
Wheels	Steel 16” x 6.5J (with cover)	Alloy 16” x 6.5J “Colmar”	Alloy 17” x 7J “Cascavel” – Comfortline Alloy 17” x 7J “Timaru” – Highline
Tyres	215/65 R16 106/104T	215/65 R16C 102/100H	235/55 R17 103W
Fuel consumption and performance			
Fuel type	Diesel	Diesel	Diesel
Fuel system	Common Rail Direct Injection	Common Rail Direct Injection	Common Rail Direct Injection
Fuel tank capacity, litres	80	80	80
	<b>Comb / Urban / Ex Urban • CO<sub>2</sub></b>	<b>Comb / Urban / Ex Urban • CO<sub>2</sub></b>	<b>Comb / Urban / Ex Urban • CO<sub>2</sub></b>
Automatic, Litre/100km • CO <sub>2</sub>	8.2 / 10.4 / 6.9 • 216	8.2 / 10.4 / 6.9 • 216	8.1 / 10.2 / 6.9 • 214
4MOTION DSG, Litre/100km • CO <sub>2</sub>	–	–	8.8 / 11.1 / 7.5 • 232

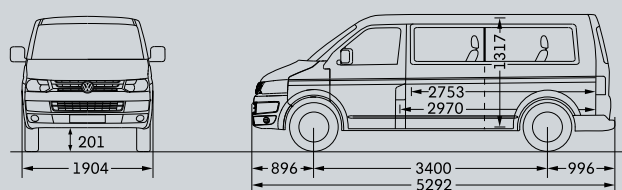
## Drivetrain

Suspension and steering	Caravelle TDI340	Multivan TDI340	Multivan TDI400
Front axle	Independent McPherson struts, sub-frame with coil springs and gas filled dampers		
Rear axle	Semi-trailing independent rear axle with coil springs and anti roll-bar		
Steering	Rack and pinion power steering (Highline models feature ‘servotronic’ power steering)		
Brakes			
Front disc brakes – vented, mm	308	308	340
Rear disc brakes – solid, mm	294	294	294
Brake systems	ESP, ABS, ASR, MSR, EDL and Hill Holder		

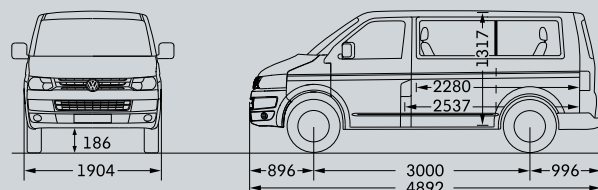
The information and the specifications contained within this document were correct at the time of issue. Due to our continuous process of improvement our products are continually updated and changes may be made to the specifications from time to time. Not all vehicles or options may be available. Check at time of ordering.

## Measurements and statistics

Weights	Caravelle TDI340	Multivan TDI340 Comfortline	Multivan TDI400 Comfortline	Multivan TDI400 Highline
Towing capacity, braked / unbraked, kg	2,000 / 750	2,000 / 750	2,000 / 750	2,000 / 750
Towing downball load, kg	100	100	100	100
Unladen mass*, kg	2,125	2,179	2,203	2,248
Unladen mass* (4MOTION models), kg	–	–	2,325	2,370
Turning circle, m	13.2	11.9	11.9	11.9
Exterior dimensions	Caravelle	Multivan		
Length, mm	5,292	4,892		
Width, mm	1,904	1,904		
Width, including door mirrors, mm	2,283	2,283		
Height, mm	1,990	1,970		
Wheelbase, mm	3,400	3,000		
Ground clearance, mm	201	186		
Interior dimensions (Passenger area)				
Maximum length, mm	2,970	2,537		
Maximum width, mm	1,692	1,625		
Maximum height, mm	1,317	1,317		
Cargo entry				
Rear tailgate width, mm	1,486	1,446		
Rear tailgate height, mm	1,295	1,262		
Lateral sliding doors width, mm	1,020	1,010		
Lateral sliding doors height, mm	1,268	1,253		
Warranty and service				
Vehicle	3 Years, Unlimited km			
Paint / Corrosion	3 Years / 12 Years			
Road side assistance	3 Years, Unlimited km			



**Caravelle**



**Multivan**

\* The Unladen Mass (UM) includes 10L of fuel, vehicle fluids and no occupants. Figures quoted are for base model vehicles only.

## Standard and optional equipment

Safety and security	Caravelle Trendline	Multivan Comfortline	Multivan Highline
Rigid safety cell with front and rear crumple zones	S	S	S
Driver and front passenger airbag	S	S	S
Driver and front passenger head/thorax airbags	O	S	S
Child safety locks on rear doors	S	S	S
Curtain airbags – passenger area	–	S	S
Alarm with internal monitoring	O	S	S
Automatic locking after take off (programmable)	S	S	S
Remote central locking with 2 remote keys	S	S	S
3 point seat belts for all passengers	S	S	S
Child seat anchor points mounted on back of 2nd row seating	S	S	S
Child seat anchor points mounted on back of 3rd row seating	S	S	S
Front height adjustable 3 point seat belts with pre-tensioners	S	S	S
Daytime running lights	S	S	S
Rear fog lamp	S	S	S
Front fog lights with cornering function	O	O	S
Rain sensing wipers and auto dimming inside mirror	–	S	S
Light and Sight package – includes dusk sensing headlights with ‘coming home’ function (includes rain sensing wipers and auto dimming rear view mirror for Caravelle Trendline)	O	O	S
<b>Driver assist</b>			
Electronic Differential Lock – front (EDL)	S	S	S
Electronic engine immobiliser	S	S	S
Electronic Stabilisation Programme (ESP)	S	S	S
Brake Assist (BA)	S	S	S
Anti-lock Braking System (ABS)	S	S	S
Anti-Slip Regulation (ASR)	S	S	S
Hill Holder	S	S	S
Front and rear parking sensors with acoustic warning	O	S	S
Rear parking sensors with acoustic warning	O	–	–
Rear view camera and park distance control rear – requires RNS315	O	–	–
Rear view camera – requires RNS315 or RNS510	–	O	S
<b>Audio and media</b>			
RCD210 Radio CD Player with 4 speakers (single DIN with storage area)	S	–	–
RCD310 Radio CD Player with AUX-IN and 8 speakers. Includes high-grade tuner, MP3/WMA CD compatibility, climate information display, and parking sensor display (if fitted)	O	S	–
RNS315 Satellite Navigation / Multimedia 5” touch screen, SD card reader, Aux-in socket. Also includes AM/FM radio with RDS and single CD player	O	O	–
RNS510 Satellite Navigation / Multimedia 6.5” touch screen, SD card reader, 30GB hard drive for maps. Also includes AM/FM radio with RDS and single CD player	–	–	S
Bluetooth™ Connectivity	S	S	S
Media input with AUX-in and iPod® / iPhone® connector	O	S	S
Multifunction display with digital speedometer, average speed, distance, range, average fuel consumption, current fuel consumption, travel time, speed warning and oil temperature readings	S	S	S
<b>Exterior</b>			
Electrical door mirrors with heating function	S	S	S
Electric sunroof	–	O	O
Electric folding door mirrors	–	O	O

\*iPod® and iPhone® are registered trademarks of Apple Inc.

## Standard and optional equipment

Exterior	Caravelle Trendline	Multivan Comfortline	Multivan Highline
Mounting rails on the roof (preparation for movable roof rack)	S	S	S
Rear window with wash/wipe and intermittent wipe	S	S	S
Front and rear mud flaps	S	S	S
Halogen twin headlights with polycarbonate casing	–	S	S
Bi-Xenon headlights with LED daytime running lights	–	O	O
Body coloured bumpers	O	S	S
Body coloured side moulding strips	–	S	S
Body coloured exterior rear view mirror covers	S	S	S
Body coloured door handles	–	S	S
Dark tinted windows in passenger compartment	O	O	S
Metallic paint	O	O	O
Pearl effect paint	O	O	O
<b>Wheels and tyres</b>			
16" x 6.5J Alloy wheels "Colmar" with 215/65 R16C 102/100H tyres	O	S (TDI340)	–
17" x 7J Alloy wheels "Cascavel" with 235/55 R17 103W tyres	–	S (TDI400)	–
17" x 7J Alloy wheels "Timaru" with 235/55 R17 103W tyres	–	–	S
18" x 8.0J Alloy wheels "Toluca" with 255/45 R18 103W tyres (with tyre repair kit)	–	–	O
Full size spare wheel (not available with optional 18" wheels)	S	S	S
<b>Seats</b>			
Seat layout, 2/2/2/3	S	–	–
Seat layout, 2/2/3	–	S	S
Front row – Driver and front passenger seats with height/lumbar adjustment and armrests	S	S	S
Second row – 2 removable swivel seats with armrests and storage drawers. Mounted on rails to allow longitudinal adjustment	–	S	S
Third row – 3 seater bench, removable and reclining. Mounted on rails to allow longitudinal adjustment	–	S	S
Seats with cloth trim	S	S	–
Seats with leatherette trim	O	–	–
Seats with Alcantara trim	–	–	O
Seats with leather appointed trim*	–	–	S
Seat heater for front seats	–	–	S
Central armrest in 3 seater bench seat	–	–	S
<b>Windows and doors</b>			
Power front windows, with 'anti-pinch' roll-back function	S	S	S
Driver and passenger window with one-touch up/down	S	S	S
Sliding side windows front and fixed rear in passenger compartment	S	S	S
Dual sliding doors	S	S	S
Power sliding doors with remote operation	O	O	S
<b>Air conditioning</b>			
3 Zone "Climatronic" climate control air conditioning	S	S	S
<b>Interior</b>			
Retractable sun blinds in passenger area	–	S	S
Rear roof lighting with ventilation, climate control and reading lights	–	S	S
Chrome plated load restraining hooks	–	S	S
Height and reach adjustable steering wheel	S	S	S
Leather trimmed gearshift knob and boot	–	S	S

\* Some parts of the leather appointed seat upholstery will contain man made material.

## Standard and optional equipment

Interior	Caravelle Trendline	Multivan Comfortline	Multivan Highline
Leather steering wheel with multifunction controls	O	S	S
Luggage cover, removable	–	S	S
Luggage compartment light	–	S	S
6 Passenger assist grips with damper	–	S	S
7 Passenger assist grips, 2 “A” and 2 “C” pillar handles	S	–	–
Vanity mirrors in sunvisor	S	S	S
12V sockets in the front and passenger compartments	S	–	–
12V sockets in the front, middle and rear compartments	–	S	S
Step inserts in footwell - with “Multivan” lettering (“Highline” for Highline)	–	S	S
Chrome rear sill plate and coat hook	–	–	S
Multiflex board / bed extension	–	O	O
Good night package – includes window blinds, waste bin, drawers in 3-seater bench and mini flashlight (requires Multiflex board / bed extension)	–	O	O
Cooling and warming box (removable)	–	O	O
2 Cup holders and 2 x 1.5 litre bottle holders	S	–	–
4 Cup holders and 3 x 1.5 litre bottle holders	–	S	–
8 Cup holders and 3 x 1.5 litre bottle holders	–	–	S
<b>Convenience</b>			
Cruise control	S	S	S
Side Assist blind spot monitoring system	–	–	O
<b>Instrumentation</b>			
Speedometer and tachometer, electronic odometer and trip meter, digital clock, fuel and coolant indicators, low fuel warning light, outside temperature and fuel gauge.	S	–	–
Speedometer and tachometer, electronic odometer and trip meter, digital clock, fuel and coolant indicators, low fuel warning light, brake pad wear indicator, white adjustable illumination and additional temperature and fuel gauge.	–	S	S

S = Standard    – = Not Available    O = Optional

The Bluetooth™ word mark is owned by The Bluetooth SIG, Inc. Not all devices will be compatible and functionality will vary depending on the device.



# Caravelle paint colours

The bodywork is galvanised first to give your Volkswagen optimum protection against mechanical and chemical influences. Only then is the paint applied in several layers and left to harden. The result is a scratch-resistant, hard finish for the top coat. You therefore leave a brilliant impression with your friends and business partners.



Sunny Yellow

**Solid paint**

**M9M9**





Candy White

**Solid paint**

**B4B4**





Salsa Red

**Solid paint**

**4Y4Y**





Ontario Green

**Solid paint**

**V7V7**





Olympic Blue

**Metallic paint\***

**S6S6**





Reflex Silver

**Metallic paint\***

**8E8E**





Natural Grey

**Metallic paint\***

**M4M4**





Sand Beige

**Metallic paint\***

**P8P8**






Toffee Brown


**Metallic paint\***

**4Q4Q**



 standard

 Caravelle Trendline

 optional extra



Night Blue  
**Metallic paint\***  
**Z2Z2**



Deep Black  
**Pearl effect paint\***  
**2T2T**

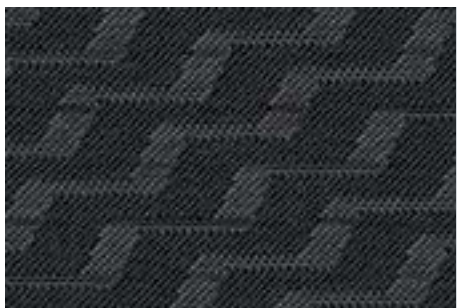


Black Berry  
**Metallic paint\***  
**C0C0**

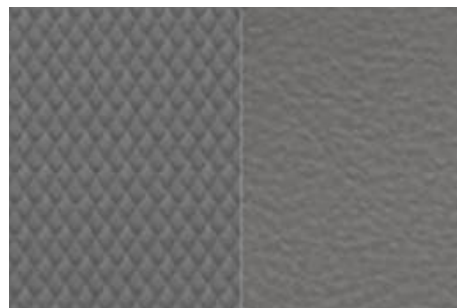


## Caravelle trim

Top quality robust materials and excellent workmanship are absolutely essential for hard-wearing, durable seat upholstery. We offer a large range of colours and designs that are ideally aligned with the available interior equipment and paint finishes.



Tasamo Anthracite  
**Cloth**  
**RE**



Rhombus Grey  
Classic  
**Leatherette**  
**upholstery\***  
**RD**



\* Metallic and pearl effect paint are available at extra cost. The illustrations on these pages can only be regarded as a general guide as the printing process cannot render the colours with absolute accuracy. Please contact your local Volkswagen dealer for details of the standard equipment and optional extras available. + The seat pattern on the left shows the centre panel, and the seat pattern on the right shows the outer panel.



## Multivan paint colours

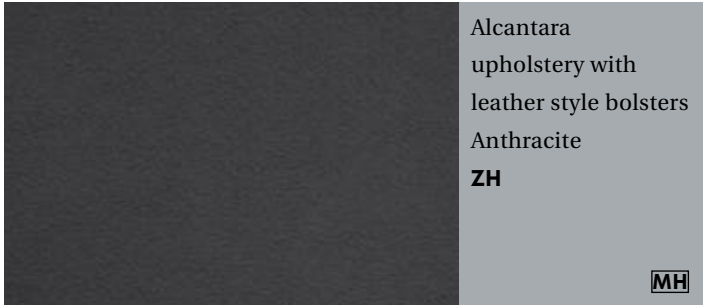
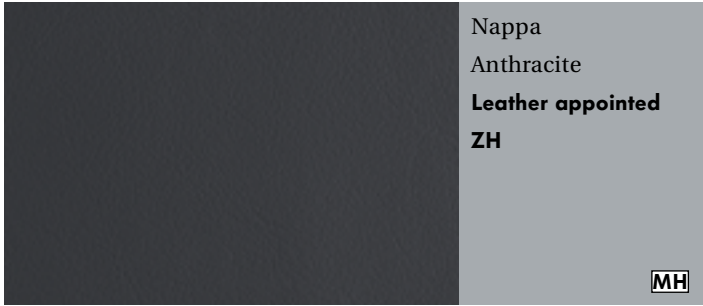
The bodywork is galvanised first to give your Volkswagen optimum protection against mechanical and chemical influences. Only then is the paint applied in several layers and left to harden. The result is a scratch-resistant, hard finish for the top coat. You therefore leave a brilliant impression with your friends and business partners.





### Multivan trim

High-quality, robust materials and skilled workmanship are essential in the manufacturing of hard-wearing seat upholstery and fine leather appointed trim. We also offer you several colours and designs that have been carefully tailored to the paint finishes and interior fittings.



\* Metallic and pearl effect paint are available at extra cost. The illustrations on these pages can only be regarded as a general guide as the printing process cannot render the colours with absolute accuracy. Please contact your local Volkswagen dealer for details of the standard equipment and optional extras available.

## Owning a Volkswagen

### Volkswagen New Vehicle Warranty

Volkswagen Caravelle and Multivan are covered by an unlimited kilometre 3 year manufacturer's warranty, which includes Volkswagen Assist (24 hour roadside assistance). People Movers are also covered by 3 year paintwork and 12 year anti-corrosion perforation warranty.

### Volkswagen Assist 24 hour roadside assistance

As a valued customer, you can be assured that, wherever you travel within Australia, you will have access to roadside assistance, 24 hours a day, 365 days a year. This is complimentary for the duration of the vehicle's original Volkswagen warranty period. You will receive help in the event of a breakdown or accident and, if required, your vehicle will be mobilised or transported to an Authorised Volkswagen Repair Centre

### Volkswagen Extended Warranty

Why not continue the confidence of a Volkswagen Warranty by purchasing a Volkswagen Extended Warranty? For further details on this option, please contact your local Volkswagen Dealer.

### Volkswagen Service

Your Authorised Volkswagen Service Centre is part of Volkswagen's global Quality Management System, ensuring Volkswagen Service Centres have factory trained technicians who are equipped with the very latest diagnostic equipment, specialist tooling and Volkswagen Genuine Parts. An Authorised Volkswagen Service Centre undertakes work in accordance with factory specified guidelines and maintenance schedules.

The new Volkswagen Service app is available to download from the Apple App Store and Google Play™ store app. Featuring parking place reminder and timer, Volkswagen roadside assistance, Volkswagen dealer search and the latest tips for services, Genuine Parts and Accessories. Keeps your Volkswagen running like a Volkswagen.

### Volkswagen Genuine Parts®

Volkswagen Genuine Parts® are designed for your vehicle and approved by Volkswagen, with particular regard to safety. The workmanship, dimensional accuracy and

materials used in these parts comply with factory specifications. To ensure safety and reliability, Volkswagen recommends the use of Volkswagen Genuine Parts®.

Volkswagen Authorised Dealers offer a 2 year warranty on Genuine Parts from the date of purchase.



Scan here to download the Volkswagen Service App on your smartphone.

## General information

Volkswagen is distributed by Volkswagen Group Australia Pty Ltd. 24 Muir Road, Chullora, NSW 2109. ABN 14 093 117 876.

Specifications are as planned at March 2015 for model year 2015 and are subject to change without notice or obligation. Cars and accessories are shown for illustrative purposes only and may not depict Australian specifications. Fuel consumption figures according to Australian Design Rules (ADR) 81/02. All Volkswagen approved parts and accessories are warranted for 2 years/unlimited kilometres. All warranties implied by legislation or otherwise are excluded to the maximum extent permitted by law. The liability of Volkswagen shall, subject to the law, be limited at Volkswagen's discretion: 1. In the case of the goods, the repair or the cost of repair, or the replacement or the cost of replacement; and 2. In the case of services, the re-supply of the services or the cost of re-supply of the services. All information in this brochure is correct at time of publication, however variations may occur from time to time and Volkswagen, in so far as it is permitted by law to do so, shall not be liable in any way as a result of any reliance by any person on anything contained in this brochure. The colours shown in the brochure are indicative only and may vary from actual items owing to the printing process. Authorised Volkswagen dealers will provide up-to-date information on model application, design feature, prices and availability on request. Volkswagen Insurance & Volkswagen Extended Warranty are provided by Allianz Australia Insurance Limited (Allianz), AFS Licence No. 234708, ABN 15 000 122 580. In arranging this insurance, Volkswagen Financial Services Australia Limited, ABN 20 097 071 460 & Volkswagen Group Australia Pty Ltd, ABN 14 093 117 896 and the authorised dealers act as agents of Allianz and not as your agent. Volkswagen Finance is a trading name of Volkswagen Financial Services Australia Limited. Locked Bag 6252, Regents Park, NSW 2143. Tel: 02 9695 6311.

# The Caravelle and Multivan

Model Year 2015

October 2015

Publication: VGACAMU005MY15

[www.volkswagen-commercial.com.au](http://www.volkswagen-commercial.com.au)

Your Volkswagen Dealer

